

# Cheshire & Merseyside Training Hub

## Newsletter



### VIRTUAL WORKFORCE SUPPORT DROP IN SESSIONS

Every month the training hub will be running virtual drop-in sessions to support with workforce planning and design, they will run for 2 hours and vary each month. These sessions are available for everyone working in Primary Care. Here we will answer your queries, signpost you to solutions and tools, and discuss key issues as a group.

Together we will support you to:

- Explore your internal and external structure and environment
- Analyse your current workforce
- Determine future workforce needs
- Identify gaps against future needs
- Explore relevant data to support decision making
- Address skill and knowledge requirements
- Identify resources to support implementation

These sessions are designed to provide you with a safe space to collaborate and work through the questions you may have. For more information on how to join contact

[karla.rimaitis@nhs.net](mailto:karla.rimaitis@nhs.net)

## Newsletter Highlights

[VIRTUAL WORKFORCE SUPPORT DROP IN SESSIONS](#)

[PRIMARY CARE IMPROVEMENT PROJECT SUPPORT](#)

[C&M CPD MONTHLY FIGURES](#)

[C&M PA INTERNSHIP](#)

[PRIMARY CARE CONTEXTUALISED APPRENTICESHIP LAUNCH EVENT](#)

[REGIONAL ENHANCING PRACTICE LEARNING SYMPOSIUM](#)

[APPRENTICESHIP FUNDING FOR LEARNING DISABILITY NURSE](#)

[LUNCH & LEARN: MAKE THE MOST OF PERSONALISED CARE GROUPS THROUGH GROUP CLINICS](#)

[CHESHIRE & MERSEYSIDE ADVANCED PRACTITIONER AWARDS 2023](#)



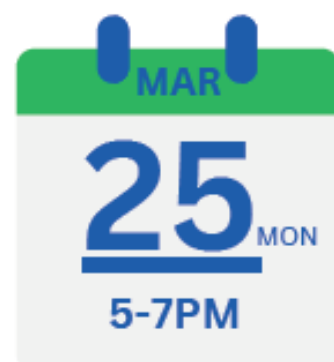
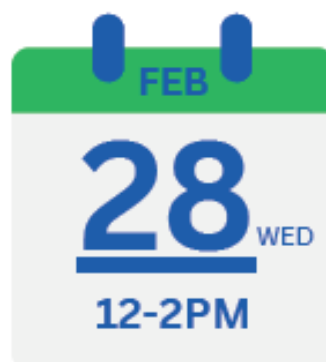
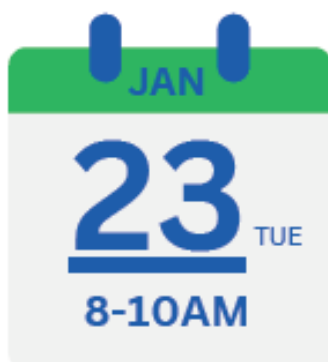
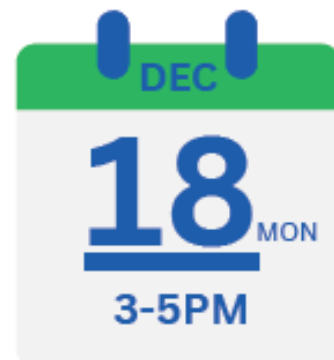
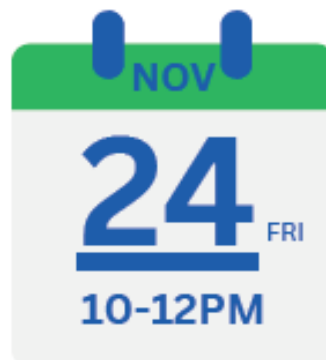
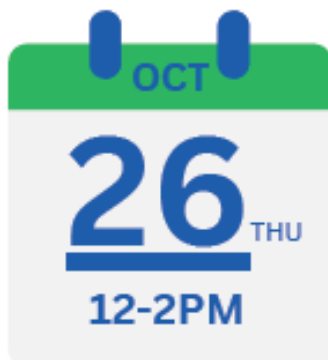
# PRIMARY CARE WORKFORCE SUPPORT DROP-IN SESSIONS



Virtual drop-in sessions available to all staff within Primary Care who would like to:

- Explore your internal and external structure and environment
- Analyse your current workforce
- Determine future workforce needs
- Identify gaps against future needs
- Explore relevant data to support decision making
- Address skill and knowledge requirements
- Identify resources to support implementation

These sessions are designed to provide you with a safe space to collaborate and work through the questions you may have.



For more information contact [Karla.rimaitis@nhs.net](mailto:Karla.rimaitis@nhs.net). To access drop in session click on the date you wish to attend for link.

# PRIMARY CARE IMPROVEMENT PROJECT SUPPORT OF UP TO £1000



The Cheshire & Merseyside Training hub have joined together with The Q Network to provide Primary Care applicants with up to £1000 funding to support in sharing your improvement initiatives to enable spread and adoption. The Q Network is a community of thousands of people across the UK and Ireland, collaborating to improve the safety and quality of health and care.

There is a limited amount of funding available therefore not all requests for funding will be agreed. For more information or an informal chat please email project lead Karla Rimaitis

## PRIMARY CARE IMPROVEMENT PROJECT SUPPORT ADDITIONAL INFORMATION

### What is an IMPROVEMENT PROJECT?

We know the road is best fixed by those who travel it.

Limited to three areas in Primary Care - *fellowships, student placements and workforce improvement*, we are looking to financially support you to create space to connect and share your ideas. Your improvement idea could involve a change of process, improving culture, redesigning services, undertaking research, or sharing knowledge or best practice.

### EXAMPLES OF HOW YOU CAN INVEST YOUR FUNDING BUT NOT LIMITED TO

1. Activities that support applied peer learning (e.g. funding for Communities of Practice or Action Learning Sets)
2. Events, such as workshops and webinars
3. Promotional material
4. Support with events such as key note speakers and facilitators
5. Building hire and food to facilitate space
6. Strengthening existing networks
7. Supporting those in need with travel costs
8. Creating tool kits and resources
9. Administrative support to bring people together
10. Evaluation/support to gather information



#### 1 CHECK ELIGIBILITY

Before investing time and energy in requesting funding check if your project is eligible using our quick flow chart. You will have up to 2024 to utilise your funding.



#### 2 REACH OUT

Send an email to [karla.rimaitis@nhs.net](mailto:karla.rimaitis@nhs.net) to arrange an informal chat and start the process - if it doesn't meet the criteria we still may be able to offer support.



#### 3 START YOUR IMPROVEMENT

Explore, research & connect with your workforce and beyond. Think about who needs to be involved in your improvement idea. Make space and bring people together.



#### 4 TELL US WHAT HAPPENED

We need to know how this funding has supported your project and enabled connections, produce an evaluation that suits your style.



#### 5 SHARE BEST PRACTICE

Come and join your fellow Primary Care colleagues at our event in Summer 2024 to share your learning and outcomes. Let's spread and adopt across Cheshire and Merseyside.

# PRIMARY CARE IMPROVEMENT PROJECT SUPPORT ELIGIBILITY CHECKER



I currently work or I am on a long term placement for the next 12 months in Primary Care in Cheshire and Merseyside and I am supported by my employer or placement with this project



I am a Q Member OR will apply to be a Q Member in the next 12 months and join this great improvement community. I will also promote Q and encourage people to join.



I am a GP or Nurse Fellow OR my improvement project is based on improving student placements OR workforce improvement



Connecting people and making space to collaborate will be a KEY part of how I invest this funding



I am committed to providing feedback to the training hub on how I have invested this funding AND I will contribute/attend a showcase event in Summer 2024

**YOU ARE ELIGIBLE FOR UP TO  
£1000 OF FUNDING**

Email [Karla.rimaitis@nhs.net](mailto:Karla.rimaitis@nhs.net) for an informal chat and start the process to make real world change



You will need to apply to Q within 12 months of accepting funding  
For any further advice and guidance please contact [karla.rimaitis@nhs.net](mailto:karla.rimaitis@nhs.net)

## Q

Q welcome applications from across the health and care sector.

If you have knowledge and experience of using different approaches to improve the quality of health and care, Q may be for you.

The Q community is here to support you to deliver change, help you navigate the challenges and opportunities ahead, and boost your skills and resilience so that we can together build a stronger health and care system for the future.

[Hear from some of our members about how Q has supported them.](#)

Joining Q is free and opportunities are open on a continuous basis. We welcome applications from people with improvement expertise based anywhere in the UK and Ireland.

You will need to complete an application that will be assessed by Q members, experienced in improvement from a range of different backgrounds. Applications are submitted via our online application portal and takes approximately 30 minutes. You can save the application at any time and return to it later.

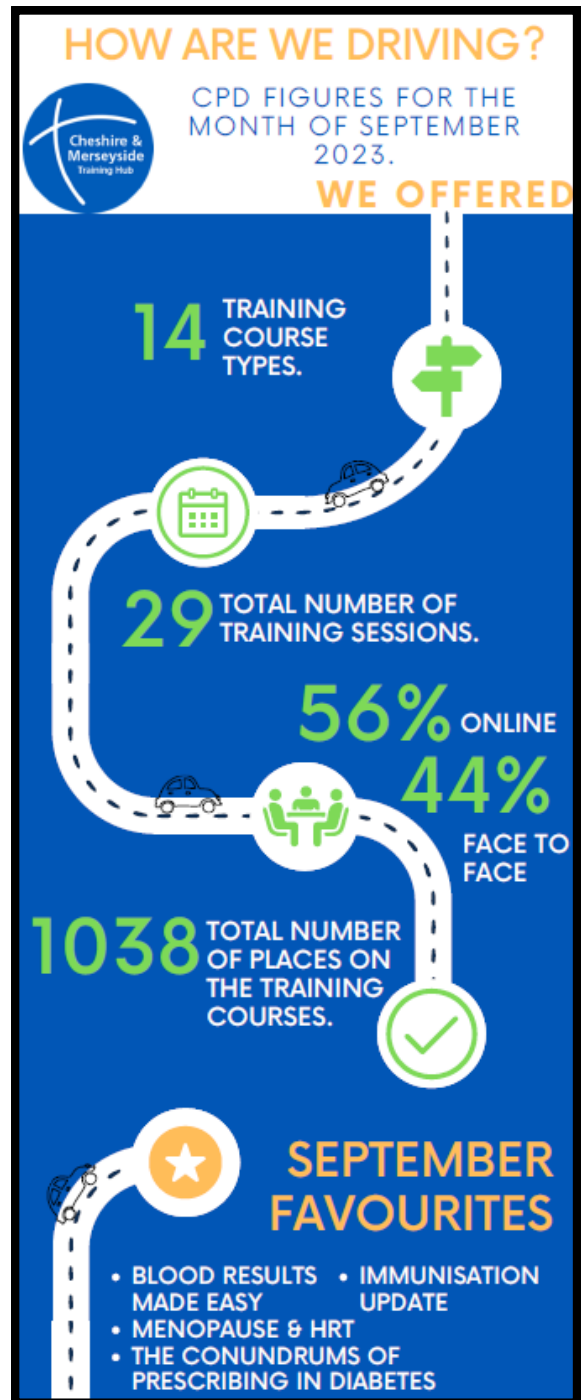
In the application we ask you to reflect on two key areas:  
Experience and knowledge and commitment

**[Apply Now](#)**

## Cheshire & Merseyside Training Hub: Continuing Professional Development (CPD) Figures.

Every month the Cheshire & Merseyside Training Hub CPD team will provide an overview of the courses offered and taken across our localities.

Please see the CPD Figures for September.



Cheshire & Merseyside Training Hub are on [Twitter](#), [Instagram](#) and [LinkedIn](#).

Follow us to keep up to date on what we are doing across our 5 locality training hub.



FOLLOW US @CMTHUB1



FOLLOW OUR PAGE [HERE](#)



FOLLOW US @CMTHUB1



## Cheshire & Merseyside Physician Associate (PA) Preceptorship Programme

We are pleased to announce that we will be running the 5th cohort of the Cheshire and Merseyside Primary Care Physician Associate (PA) Preceptorship Programme. This offer is available to both newly qualified PAs or PAs transitioning from another area (i.e. moving from an Acute Trust) and working in primary care in Cheshire and Merseyside. The start date for **Cohort 5** is on the **15th November 2023**.

HEE are in the process of releasing the required application forms so that practices can claim for the £5000 funding for having a PA on the programme. The HEE £5,000 preceptorship funding is for PCNs to liaise with the PA practices. Upon successful applications, practices are to complete the application form to ensure the funding can be provided. We will be in touch once those application forms are available.

In the meantime, for a PA apply for a place please complete the [linked form](#) **no later than 13th November 2023**. Applications after this date will not be accepted if all spaces have been filled. We will keep them on a reserve list should there be a 6th cohort in the future.

If you have any questions, please do not hesitate to get in touch at [etp.manager@nhs.net](mailto:etp.manager@nhs.net)

Cheshire & Merseyside Training Hub are on [Twitter](#), [Instagram](#) and [LinkedIn](#).

Follow us to keep up to date on what we are doing across our 5 locality training hub.



FOLLOW US @CMTHUB1



FOLLOW US @CMTHUB1



FOLLOW OUR PAGE [HERE](#)

## Primary Care Contextualised Apprenticeships Launch Event

You are invited to participate in the Primary Care Contextualised Apprenticeships Launch Event which offers practice managers and managers alike the opportunity to gain insight to the apprenticeship pathways and resources available. See below for details.



## Primary Care Contextualised Apprenticeships Launch Event

Join us for this launch event where we will cover: -

- Information on primary care contextualised apprenticeships and approved providers
- Apprenticeship basics
- How practices can apply for levy transfers
- Apprenticeship pathways
- Support available from your primary care training hub
- Toolkit and resources for primary care apprenticeships

**Target Audience** – Practice managers, team leaders, managers, practice apprenticeship leads and any staff with responsibility for workforce, training and upskilling, existing primary care staff who are considering completing an apprenticeship within primary care.

31<sup>st</sup> October 2-3pm via MS teams

Book your place [here](#)


Or by scanning QR code



If you require any further information, please email – [Natalie.bradley7@nhs.net](mailto:Natalie.bradley7@nhs.net)

**Workforce, Training and Education (NHS England - South West):**

Register your interest in attending NHS England webinar using the link provided.



## Regional Enhancing Practice Learning Symposium

**HEI Simulated Learning Environment Programme**  
**Thursday 19<sup>th</sup> October 2023**  
9:00 – 13:00  
Delivered via MS Teams

Please join us for a virtual event where the eleven North West based Higher Education Institutions involved in the Simulated Learning Environments Programme will be showcasing the progress of their projects, as well as the successes and challenges of the programme.

There will also be a panel discussion about simulated practice learning. Stakeholders are invited to submit their questions ahead of the event via the registration form.

**Please register via the QR code.**



We are **always learning**  
*People Promise*



## Apprenticeship funding to support Learning Disability Registered Nurse Apprenticeships (RNDA) 2023/24

We are delighted to offer the opportunity for employers to apply for training grant funding to support those accessing the RNDA (Learning Disabilities) at a rate of £8300 per apprentice per year. The eligible routes include:

- Undergraduate and post graduate Learning Disability RNDA
- Progression from NA to RN (Learning Disability) via the apprenticeship route.

This funding is available for those supporting apprentices on programmes commencing **1st April 2023 – 31st March 2024**. Please note: this application process is for funding only, and those wishing to undertake the programme will need to apply to the university of their choice via the university application process.

### Criteria:

- Meet all the entry criteria for the RNDA apprenticeship award as set out by the HEI provider of the RNDA programme.
- All EOI submissions must be supported by the Director of Nursing or nominated deputy and the Trust Apprenticeship Lead.
- Have secured / in process of securing a place on the RNDA (Learning Disability) programmes in the 23-24 financial year.

### Funding support utilisation

#### In scope:

- Apprentice salary support / backfill costs associated with off-the-job training.
- Apprentice travel and subsistence costs associated with the training programme.
- Any accommodation costs associated with off-the-job training.

#### Out of scope:

- Support for Literacy & Numeracy training
- Learning support payments.
- End point assessment (EPA) costs as these are included within the provider framework.

### How to apply

Please complete the [Expression of Interest](#) **no later than 5pm on Friday 22nd October 2023**. Confirmation of allocation of funding is expected by the end of November 2023. Please note, this funding cannot be allocated for apprentices who are receiving a training grant via any other funding streams. If you have any questions, please email [england.nw.nursing@nhs.net](mailto:england.nw.nursing@nhs.net).

## Lunch and Learn: Make the most of personalised group care through group clinics

### Ease winter pressures for families, children and young people

Hear from teams who have harnessed group care to proactively address winter pressures amongst families with young children and children living with asthma.

Tuesday 28 November 12:30-13:30

**BOOK WEBINAR SESSION [HERE](#):**

## Cheshire & Merseyside Advanced Practitioner Awards 2023

The Cheshire & Merseyside Advanced Practitioner Awards submissions for nominations are due by the **20th October 2023**. Please see [attached](#) criteria. The nominations can be submitted directly to [sara.dalby@liverpoolft.nhs.uk](mailto:sara.dalby@liverpoolft.nhs.uk) with the organisational lead copied into the email.

The categories are as follows:

- C&M AP lead of the year
- C&M AP of the Year
- C&M AP Team of the Year
- C&M Trainee AP of the Year
- C&M AP Champion - Clinical pillar
- C&M AP Champion - Education pillar
- C&M AP Champion - Research pillar
- C&M AP Champion - Leadership pillar

The award criteria for each category are available here. Before submitting your nominations please ensure you:

- Read the award criteria
- Include evidence for all aspects of the criteria
- Choose the right category.

## A Message from Cheshire & Merseyside Training Hub

The Cheshire & Merseyside Training Hub is a regional training hub with 5 locality hubs working under it and in partnership to supporting the development and transformation of the primary and community care workforce through education and training across Cheshire and Merseyside.

We bring together education and training resources from NHS organisations, community providers as well as local authorities. With access to a range of information, resources, and contacts within national and local networks we look to offer practical guidance, support on educational workforce development. The Cheshire & Merseyside Training Hub are always working on innovative pieces of work that offer that helping hand to practices at our local level.

If you have any suggestions or ways we can improve our communication, we would love to hear from you. Please let us know by completing this [short survey](#).

