

# Cheshire & Merseyside Training Hub

## Newsletter



### **NHSE NEW TO PRACTICE GP FELLOWSHIP PROGRAMME**

The NHSe New to Practice GP Fellowship Programme is a National commitment in the GP Contract. It is a two year programme of support, available to all newly-qualified GPs and nurses with an explicit focus on working within and across a PCN. Participants receive funded mentorship and funded CPD opportunities of one session per week (pro rata), and rotational placements within or across PCNs to develop experience and support transition into the workforce. The programme looks to support individuals in the AQuA Quality Improvement Programme aimed at developing individuals to support improvement across their practices and PCNs.

As a whole, it is available to all **newly-qualified GPs and nurses** working/ about to work in substantive roles in general practice. Applicants must be **within their first 24 months since qualifying** and may be employed by a practice, across a PCN, cluster of PCNs or another body.

There is no application process but GPs who are eligible will need to complete a registration form. To express an interest or request more information please contact:

[sthccg.primarycareacademy@nhs.net](mailto:sthccg.primarycareacademy@nhs.net)

## Newsletter Highlights

[NHSE NEW TO PRACTICE GP FELLOWSHIP PROGRAMME](#)

[APPLICATIONS OPEN: POST CCT FELLOWSHIP 2023/24](#)

[CONTINUING PROFESSIONAL DEVELOPMENT \(CPD\)](#)

[NORTHWEST EDUCATION TRANSFORMATION WEBINARS](#)

[EARLY CAREER & NEWLY QUALIFIED NURSES AND MIDWIVES QI NETWORK CO-DESIGN FORUM](#)



## Applications Open: Post-CCT Fellowship 2023/2024

Applications for the **2023-2024 NW WTE Post-CCT Fellowship** are now open and the closing date for applications is **Friday 28th July 2023 at 5pm**. This fellowship was previously called the HEE Post-CCT Fellowship. Please note below further information about the fellowship, and the application process.

### Overview

Post-CCT Fellowships are innovative posts available for GPs in their first 5 years after qualification. In 2023/24, NW WTE will fund 28 fellowships across the North West.

Please view the 'North West Workforce, Training and Education (NW WTE) Post-CCT Fellowship Information' document attached for full details, or via our website.

<https://www.nwpgmd.nhs.uk/post-cct-gp-fellowship-programme-nw-wte>

### How to Apply

Bids can be submitted to the Primary Care School using the link below:

[Application Form - 2023-2024 NW WTE Post CCT Fellowship](#)

Please submit your application as soon as possible, **applications close on Friday 28th July 2023 at 5pm**.

The first review of applications will take place following this deadline, and all organisations will be notified of the outcome. Additional bids submitted after Friday 28th July may still be considered if any fellowships allocations remain, however this cannot be guaranteed.

For further information, please contact [primarycareschool.nw@hee.nhs.uk](mailto:primarycareschool.nw@hee.nhs.uk)

### NHSE New to Practice Fellowship

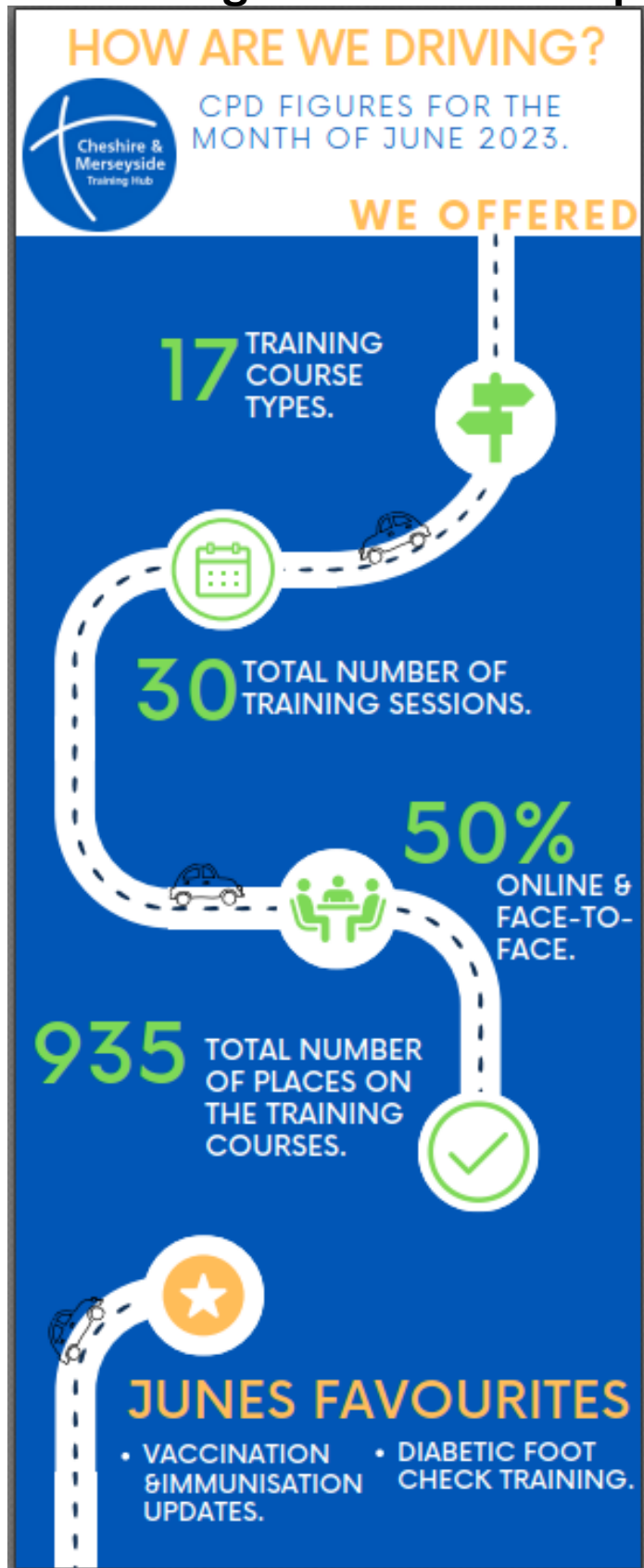
You may also be aware that NHS England offer a New to Practice fellowships for all newly qualified GPs within 24 months of CCT who are in a substantive post - salaried or partnership, and offer coaching, mentoring and educational support. They are organised by the training hubs - contact details to find out more about these are below.

Greater Manchester [wbccg.GMTH@nhs.net](mailto:wbccg.GMTH@nhs.net)

Cheshire and Mersey [ecccg.cheshiretraininghub@nhs.net](mailto:ecccg.cheshiretraininghub@nhs.net)

Lancashire and South Cumbria [lsc.th@nhs.net](mailto:lsc.th@nhs.net)

## Continuing Personal Development (CPD)



We mentioned in the last newsletter issue, the Cheshire & Merseyside Training Hub have a designated CPD team who have detailed the 14 AHPs that CPD is available to along with identifying upcoming CPD opportunities on a month to month basis. Regular communication is sent to remind all of the upcoming courses.

Here are our CPD figures for the month of June 2023 to show how many courses were offered, number of places on that courses along with current highly sought courses.

Click [HERE](#) to see the available CPD courses and the Yearlong Programme to sign up to courses. If you are unable to find a course that is available on the year long programme or if you have any queries please email: [cmicb-wi.wirraleth.cpd@nhs.net](mailto:cmicb-wi.wirraleth.cpd@nhs.net)

## North West Education Transformation Webinar

### Apprenticeships in Mental Health Nursing – Showcase Webinar

Join us for the Apprenticeships in Mental Health Nursing webinar, where we will cover: -

- Apprenticeships related to mental health nursing.
- Apprenticeship workforce strategies and career frameworks.
- The role and contribution that apprenticeships make in transforming the mental health nursing workforce.
- Show case examples of best practice in the development of mental health nursing workforce development strategies and business cases.
- Showcase examples of the impact Nursing Associates are having in mental health nursing.

**Target Audience** – Nursing Leaders / Managers, Apprenticeship Leads, HR managers, HEI apprenticeship teams, and any staff with a responsibility for workforce, training and upskilling.

**Date, time, and venue for the webinar**

Wednesday 16<sup>th</sup> August 2023, 1:00 pm – 2:30pm via MS Teams

Book your place by clicking [HERE](#)

Or by scanning the QR Code.



### Launch of the Neurodiversity Toolkit

The NHS England, North West, Workforce, Training & Education (WT&E) Directorate would like to invite you to participate in a webinar, ‘The needs of neurodiverse students in clinical practice and launch of the Neurodiversity Toolkit’.


The webinar will focus on Learners who are neurodivergent in clinical practice.

The webinar will be introduced by Jean Hayles, Deputy Regional Head of Nursing, Midwifery & Public Health (WT&E) NHS England, Northwest.

Please [click here](#) to register for this webinar.

The link to join the webinar will be sent to you at least one week prior to the event. If you require any further information about the webinar, please contact NW Nursing [nw.nursing@hee.nhs.uk](mailto:nw.nursing@hee.nhs.uk)

## Early Career and Newly Qualified Nurses and Midwives QI Network co-design forum



**PROF CHARLOTTE MCARDLE - DEPUTY CHIEF NURSING OFFICER, NHSE**  
&  
**JANE MURKIN - DEPUTY DIRECTOR SAFETY & IMPROVEMENT - NURSING, NHSE**

**INVITE YOU TO PARTICIPATE IN THE CO-DESIGN & DEVELOPMENT OF A QI NETWORK FOR EARLY CAREER AND NEWLY QUALIFIED NURSES AND MIDWIVES**

**26 JULY 2023 12:30-14:00**

**EARLY CAREER AND NEWLY QUALIFIED NURSES & MIDWIVES**

- The network aims to support nurses and midwives to develop and grow their knowledge, skills and experience in Quality Improvement
- This network will contribute to nursing and midwifery leadership development and retention of the workforce

*The Nursing Directorate are working in partnership with Kathryn Perera from the Horizons team*

**WE WILL ALSO HEAR FROM :**  
**DR HELEN BEVAN AND KATY McDONALD ON #STAVANDTHRIVE- INTERNATIONAL RETENTION PROGRAMME AND CHARLOTTE JAKAB-HALL ON NURSING NOW AND PEER SUPPORT**

**REGISTER INTEREST FOR ATTENDANCE ONLINE AT ENGLAND.QI.EARLYCAREERNURSESANDMIDWIVES@NHS.NET**

The Early Career and Newly Qualified Nurses and Midwives QI Network co-design forum is taking place on **26th July 2023 12:30-14:00**, we would really welcome your support and assistance with promoting and sharing this opportunity with newly qualified nurses and midwives to attend, participate in the forum and the design and development of the QI network.

The network aims to support nurses and midwives to develop and grow their knowledge, skills, and experience in Quality Improvement and will contribute to nursing and midwifery leadership development and retention of our workforce. From the early work on this last year, we have agreed the focus to be on those nurses and midwives within the first 5 years of qualification.

Register interest for attendance online at [england.qi.earlycareernurseandmidwives@nhs.net](mailto:england.qi.earlycareernurseandmidwives@nhs.net)

## A Message from Cheshire & Merseyside Training Hub

The Cheshire & Merseyside Training Hub is a regional training hub with 5 locality hubs working under it and in partnership to supporting the development and transformation of the primary and community care workforce through education and training across Cheshire and Merseyside.

We bring together education and training resources from NHS organisations, community providers as well as local authorities. With access to a range of information, resources, and contacts within national and local networks we look to offer practical guidance, support on educational workforce development. The Cheshire & Merseyside Training Hub are always working on innovative pieces of work that offer that helping hand to practices at our local level.

If you have any suggestions or ways we can improve our communication, we would love to hear from you. Please let us know by completing this [short survey](#).

