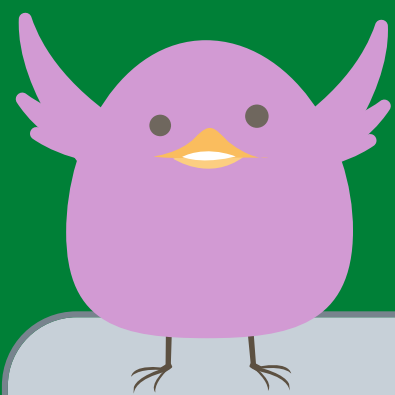


Starting  
September  
2021

# Preceptorship Programme for General Practice Nurses



Helping new to Primary Care Nurses gain critical foundational skills, and knowledge, enabling them to provide the core services required of a GPN

## LEARNING DOMAINS

- What it's really like to work in Primary Care
- Cervical Sample Takers Course for new sample takers
- Immunisation Foundation Course for Nurses
- The management of long term conditions, including Diabetes, respiratory illnesses and Chronic Kidney Disease
- Learning disability and mental health awareness
- The use of digital technologies to support patient self-care

## Breaking News!

We are working in collaboration with Buckingham University (situated in Crewe, Cheshire) for accreditation of this bespoke course at level six

## STUDENT REQUIREMENTS

*Applicants must:*

- Be registered with the NMC
- Be employed by a Primary Care Practice
- Have completed an internal induction process within the Practice
- Be receiving mentorship support from an experienced nurse
- Have access to an e-learning programme which supports management of long term conditions in Primary Care
- Be committed to monthly study days

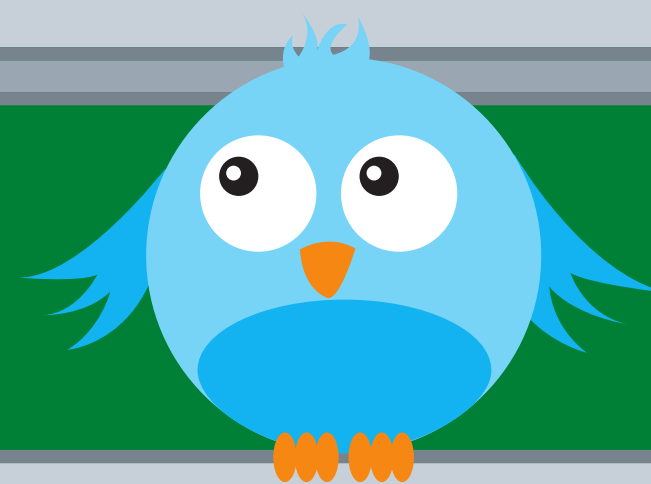
## PRACTICE REQUIREMENTS

- Be willing to support the student by providing access to learning opportunities and time to learn
- Agree to a contribution of £250 (consider using CPD funds allocated to GPNs)

## HOW TO APPLY

Send an email to: [england.cmgpfv@nhs.net](mailto:england.cmgpfv@nhs.net) with following information:

- Your contact details and the Practice address
- Confirmation of your commitment, as an employer, to support the continuing development of the student during the full length of the course
- The name and contact details of the relevant Nurse Mentor



## FURTHER INFORMATION

The course will run from September 2021 (date tbc), to the end of March 2022 (date tbc)

### CONTACT

[ecccg.cheshiretraininghub@nhs.net](mailto:ecccg.cheshiretraininghub@nhs.net)  
for further details



[www.cmthub.co.uk](http://www.cmthub.co.uk)

